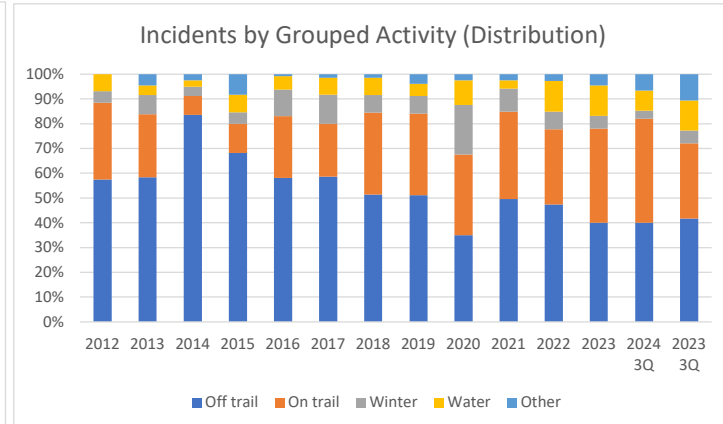
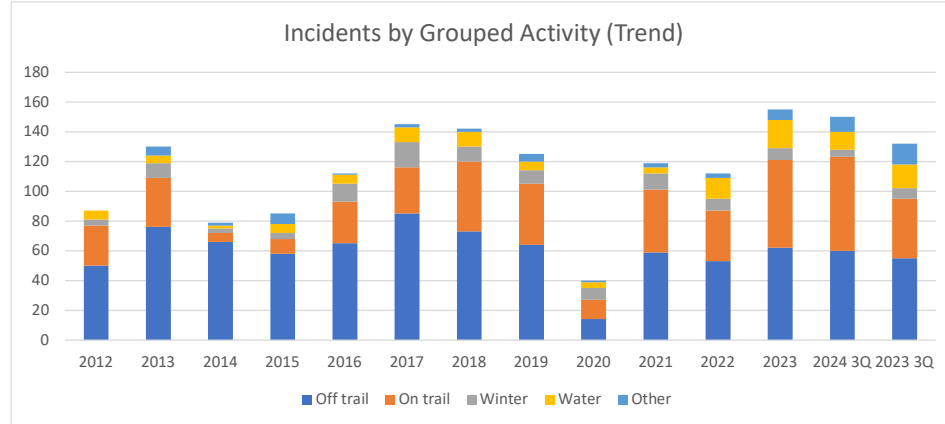


Incidents by Activity Group

Through 3Q 2024

Incidents by Activity Group	2010	2011	2012	2013	2014	2015	2016	2017	2018	2019	2020	2021	2022	2023	2024 3Q	2023 3Q
Off trail	48	51	50	76	66	58	65	85	73	64	14	59	53	62	60	55
On trail	26	36	27	33	6	10	28	31	47	41	13	42	34	59	63	40
Winter	7	2	4	10	3	4	12	17	10	9	8	11	8	8	5	7
Water	3	1	6	5	2	6	6	10	10	6	4	4	14	19	12	16
Other	2	3	0	6	2	7	1	2	2	5	1	3	3	7	10	14
Total	86	93	87	130	79	85	112	145	142	125	40	119	112	155	150	132
Off trail %	56%	55%	57%	58%	84%	68%	58%	59%	51%	51%	35%	50%	47%	40%	40%	42%
On trail %	30%	39%	31%	25%	8%	12%	25%	21%	33%	33%	33%	35%	30%	38%	42%	30%
Winter %	8%	2%	5%	8%	4%	5%	11%	12%	7%	7%	20%	9%	7%	5%	3%	5%
Water %	3%	1%	7%	4%	3%	7%	5%	7%	7%	5%	10%	3%	13%	12%	8%	12%
Other %	2%	3%	0%	5%	3%	8%	1%	1%	1%	4%	3%	3%	3%	5%	7%	11%



CMS Incidents by Activity Group

Through 3Q 2024

ORG CMS Incident by Activity	2010	2011	2012	2013	2014	2015	2016	2017	2018	2019	2020	2021	2022	2023	3Q 2024	2023 3Q
Off trail	10	10	13	17	20	17	15	15	12	10	2	12	9	12	12	11
On trail	3	4	5	4	1	1	3	0	5	3	0	4	7	9	6	5
Winter	1	1	2	2	1	1	1	1	1	4	3	3	2	2	1	1
Water	0	0	0	2	1	0	1	2	3	0	0	1	1	0	0	0
Other	2	3	0	3	2	4	0	1	2	2	0	0	2	6	4	0
Total	16	18	20	28	25	23	20	19	23	19	5	20	21	29	23	17
							7									
Off trail %	63%	56%	65%	61%	80%	74%	75%	79%	52%	53%	40%	60%	43%	41%	52%	65%
On trail %	19%	22%	25%	14%	4%	4%	15%	0%	22%	16%	0%	20%	33%	31%	26%	29%
Winter %	6%	6%	10%	7%	4%	4%	5%	5%	4%	21%	60%	15%	10%	7%	4%	6%
Water %	0%	0%	0%	7%	4%	0%	5%	11%	13%	0%	0%	5%	5%	0%	0%	0%
Other %	13%	17%	0%	11%	8%	17%	0%	5%	9%	11%	0%	0%	10%	21%	17%	0%

